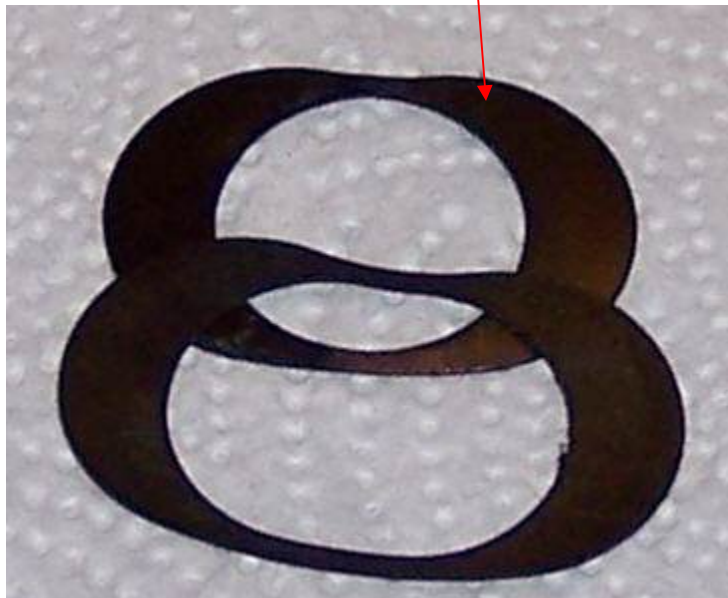
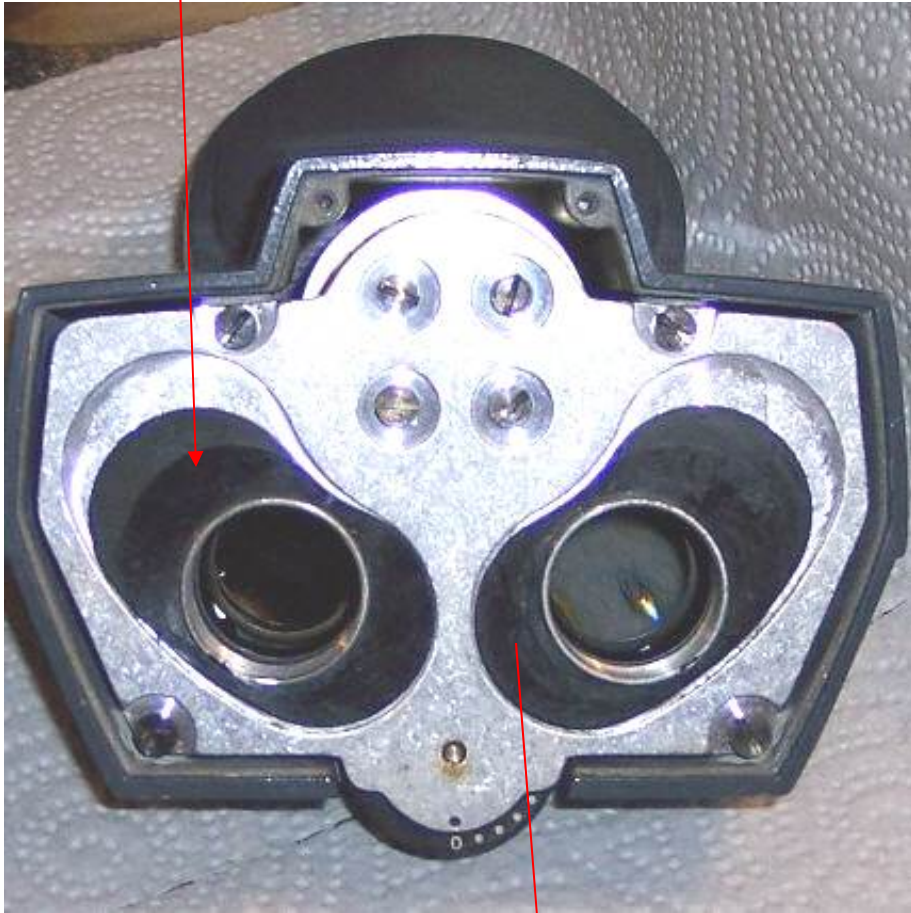


Misc thoughts: window / between eyepiece and internal optics / I tend to believe that a window was used for reducing optical contamination by the external enviroment.



I believe that the glass window fitted here

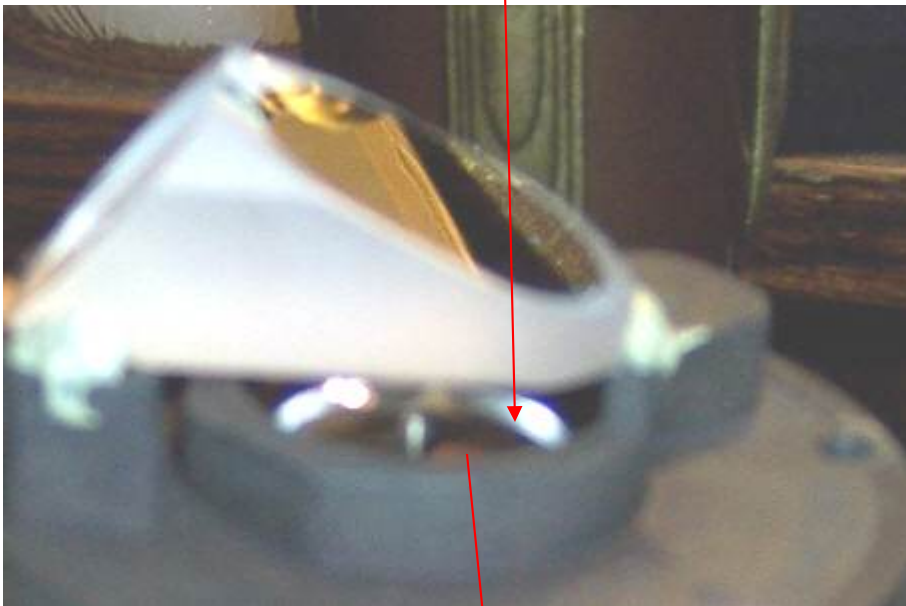
Environment seal sliders ?? Allows L R optics eye separation



Are these supposed to be coated for sliding? Seems to work well as is.

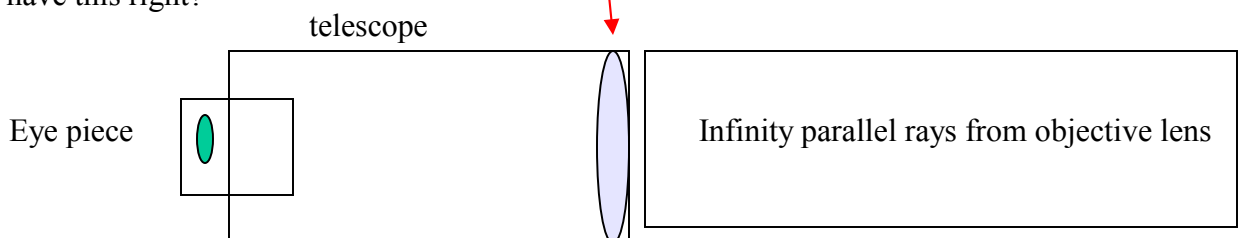


I have (with eypiece) tested the unit as shown to see for myself if this is a telescope. Sure works like this to me.



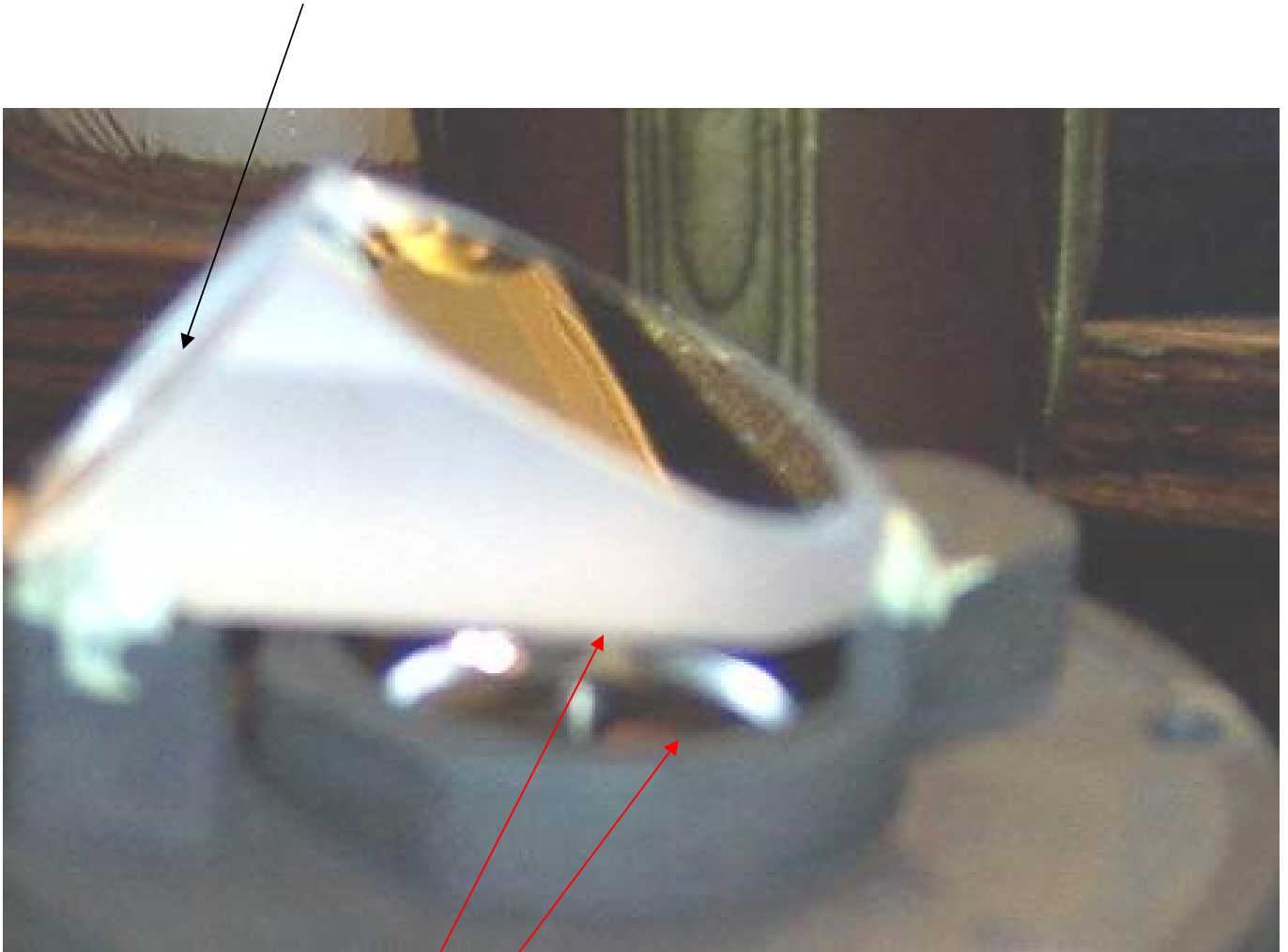
This lens is positive (magnifying)

Do I have this right?



My Impression

Available for cleaning if necessary; I think it has AR coating to watch out for.



Tight for cleaning

AR coating to watch out for is accessible

My impulse : stay away from this regarding cleaning!!

1st surface with respect to internal boundary



I have resilvered vintage prisms to achieve internal first surface internal boundary; followed by a grayish coat to protect the silver coating. But the above doesn't appear to use old fashion gray coat. Is this silver coating or aluminum coating?

AR coating to watch out for if cleaning

I believe these are glued together with optical cement

Stay away from here if cleaning; beam splitting



AR coating to watch out for if cleaning